



Features

- Shell constructed with durable molded plastic
- Integrated twin scroll blower
- 4 air outlets (choice of spigot or louver)
- 3 fan speeds
- TXV included
- Integrated heater core

Air Distribution and Control Panel



Suggested Applications



Recommended Condenser



KC-750

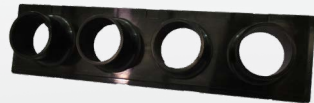
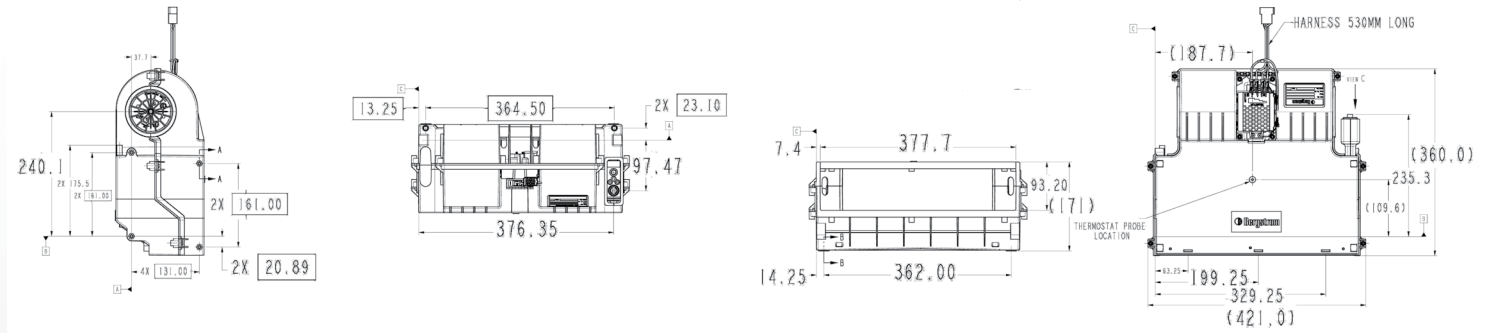
Kelvin HVAC Technical Specifications

Model	Kelvin HVAC 12V	Kelvin HVAC 24V
Voltage	12V	24V
Capacity	Cold: 20,810 BTU/hr (6,1 kW) Hot: 32,410 BTU/hr (9,6 kW)	Cold: 20,810 BTU/hr (6,1 kW) Hot: 32,410 BTU/hr (9,6 kW)
Amps	21.6 A/h	11 A/h
Maximum air flow	460 SCFM (780 m³/hr)	460 SCFM (780 m³/hr)
Dimensions (L x W x H)	14.71in x 16.53in x 6.69in (360mm x 421mm x 170mm)	14.71in x 16.53in x 6.69in (360mm x 421mm x 170mm)
Weight	13.9 lb (6.5 kg)	13.9 lb (6.5 kg)
Mounting Position	Horizontal (Floor or Headliner)	Horizontal (Floor or Headliner)

(*) System output (BTU/hr) is based on system component-calculated capacities in accordance with ISO1515 standard test conditions: outside temperature 100°F (38°C), humidity 40%.

Unless otherwise stated, performance measurements are conducted in accordance with SAE J638 for heaters and IMACA 200 for evaporators.

Line Drawing



3499048



3499052



3499058



3499059



3499054

Kelvin HVAC Order Guide*

Part	Catalog / Part Number	Notes
Unit Part Number	KK840-12 / 1000813036 KK840-24 / 1000813038	12V 24V
Harness	3499033 / 1001381981 3499034 / 1001404710 3499037 / 1001405220 3499038 / 1001405000	4 meters of hose for 12V 8 meters of hose fvor 12V 4 meters of hose for 24V 8 meters of hose fvor 24V
Control Panel	3499047 / 1001159300 3499067 / 1001327197	Vertical Horizontal
Fascia Panel	3499048 / 1001004175 3499052 / 1001004181 3499058 / 1001161239	Four Spigot Outlets Four Chrome and Black Louvers Four Black and Black Louvers
Bracket	3499054 / 1001013646 3499059 / 1001015622	Floor/Ceiling Mount Wall/Bulkhead Mount
Condensate Kit	3499050 / 1000988616 3499051 / 1000988618	Single Side Double Side

*Must purchase one option in each category of the order guide for proper installation.

Kelvin HVAC Service Parts Guide

Part	Catalog / Part Number	Notes
Resistor	2099027 / 1000067312	12V / 24V
Water Valve	2499157 / 1000724772	12V / 24V
Actuator	2199072 / 1000593041	12V / 24V
Thermostat	3499071 / 1000541645I	12V / 24V



When placing an order please contact your sales representative to review your order to ensure the proper system has been identified for your vehicle application.

Availability of the products shown in this catalog is subject to change without notice by Bergstrom, Inc. For the most current product information please visit the Kysor distributor website at <https://parts.shop.bergstrominc.com/>.

Warranty

- 1-year limited warranty